

SOUTH EAST MARTS SALES NEWS



Auctioneers

HAILSHAM'S HEADLINES



Auctioneers

**FIRST ARDINGLY COLLECTIVE
SALE OF THE YEAR**

SATURDAY 17TH FEBRUARY

LAST CALL FOR ENTRIES

**THURSDAY 1ST FEBRUARY 2024
HAILSHAM MARKET**

Market Street, HAILSHAM, Sussex. BN27 2AG

Tel:- 01323 844874

Mobile:- 07890 359622

Roger Waters' Mobile 07860 663345 (Home 01273 832360)

e-mail address ~ info@southeastmarts.co.uk

visit our web site ~ www.southeastmarts.co.uk

FARM DIRECT

TEL: RRW 07860 663345 or 01323 844874

BULL BANK

Choice of Pedigree Sussex stock bulls

Registered Hereford stock bull, good temperament

DAIRY DIRECT

~~SOLD~~
Twelve Friesian In-Calf Heifers, spring calving, TB1 parish

BEEF STOCK DIRECT

Outwintered, TB1 parish

Six British Blue x early spring calving heifers

Seven Aberdeen Angus x early spring calving heifers

also Choice of Native Bred in-calf cows

FODDER DIRECT

Hey there is Hay

at Horsham, Hailsham & Herstmonceux

Big Squares & Round Bales

some June made, some July made

also

Big Bale Organic Haylage
double wrapped

Relief Milker

Relief milker required 2 days per fortnight and maybe some holiday cover
for 240 cow autumn block calving herd in Berwick.

Duties include milking and some scraping. 24/24 rapid exit parlour.

Some experience required but training given to the right applicant.

Email: rrossifarm@gmail.com or tel: 01323 811267

NEXT SALE OF STORE CATTLE

Monday 12th February 2024

Present entries include-

35 Friesian and Friesian x steers, 15/18 months, TB4
from **Ian Lockwood**

16 Simmental x steers & heifers, 10 months
plus **2** British Blue x heifers, 18 months, TB4
from **S & J Feakes**

8 Charolais x steers & heifers, 18/24 months, TB4
from **Graham Larwood**

4 Purebred Aberdeen Angus steers & heifers, 13/16 months,
TB4, outwintered from **K Booker**

20 Simmental x, Limousin x steers & heifers, 20 months
from **R Verity**

6 Purebred Sussex steers, 23/24 months, TB4
from **L Brash**

19 Limousin x steers & heifers, 18/20 months
from **SC West**

...many more entries anticipated

Entries close Thursday 8th February 2024

JACK RUSSEL DOG PUPS

8 weeks old, microchipped, wormed and docked
Available now - Partdridge Green

Holly 07972 535247

HAILSHAM MARKET - PRIMESTOCK DAY

PRIME STOCK – WEDNESDAY 31ST JANUARY

PRIME CATTLE (7) *Auctioneer: Roger Waters*

Short in numbers, very much a stand on trade. **Waters Partnership's** homebred Simmental x steer 268p per kg and grosses **£1822.40** and Beef Shorthorn heifer 260p and grosses **£1573**. **James Seller's** Sussex steers to 237p per kg.

CULL CATTLE (2) *Auctioneer: Roger Waters*

Cull cows all wanted - no meat cows forward. **Park Farm's** young Sussex cow to 157p per kg and **Woodhill's** young Hereford x to 137p per kg.

CALVES (3) *Auctioneer: Roger Waters*

Stuart Thomas from Cooksbridge supports - always offer quality calves. His two week old British Blue x heifer **£177** and Aberdeen Angus x bulls **£160** and **£127**.

PIGS (3) *Auctioneer: Alex Moss*

King of the Landrace returns to Hailsham, Mr John Brooker. Three beautiful cutters reaching 135p per kg and grossing £123.75 each.

Entered for next week - 6 Saddleback store pigs, 8 weeks old

Please let us know what you have so we can notify our prospective buyers in advance.



Malcolm McCubbine passed away peacefully at home
27/5/1931 - 23/1/2024

Funeral to be held 5th March at Leatherhead Crematorium 11am

Bob Peters died very peacefully at home on the 19th January aged 98
Funeral service at Ringmer Parish Church on Friday 9th February at 2.30 PM
Donations for the RABI or Ringmer Parish Church would be gratefully received

HAILSHAM MARKET - PRIMESTOCK DAY

SHEEP – 1561

Yet another big day at Hailsham. Sellers and buyers aplenty. The temporary pens were full with breeding sheep.

1,000 tractors and 37 road blocks have jammed the French roads but what are they and their neighbours doing about Bluetongue? The “woke” brigade are trying to ban the singing of “Rule Britannia”. What will be next? Onward Christian Soldiers?!

PRIME HOGGETS (728) Auctioneer: Nick Young Overall average 284p

A marvellous show of hoggets from four different counties flocked to Hailsham, and for good reason. The trade for the best did not disappoint with all the best sold between £147 and £140 per head. See the “Hailsham Hall of Fame” listed below.

Leading prices: RL Pack £147, £146, £145, £142, £140 (twice), JG Eales & Son £144, D Spanton £142, M & L Farming £140 (twice)

Leading prices per kilo: E Sargent £324p, 301p, JG Eales & Son 323p, 316p, 313p, EJ Day (Penshurst) Ltd 303p, RL Pack 303p, 300p, 299p, 296p

STORE SHEEP (452) Auctioneer: Nick Young

A great entry and a trade to match. **Ian Williams** led the way at **£118** closely attended by **Gareth Evans £117; Henry Brown £113** and **£110**.

Leading prices: I Williams £118, £96, G Evans £117, £108, RFF Brown £113, £110, M & L Farming £108, K Wheeler & Sons £100, E Sargent £100, AGL Ainslie £98

CULL EWES & RAMS (245) Auctioneer: Nick Young

The best were an incredible trade with **Holly Power** in the ascendancy at **£155** and **£140**; attended by **Gareth Evans £125; Rosie Russell £122**. It was very much a two level trade with not enough of the best sorts and the very worst sorts are incredibly difficult to place, whatever the price.

Leading prices: Holly Power £155, £140, £117, G Evans £125, R Russell £122, JCH Garner £121, JE Lamplugh £120 (twice), Kevin Reed £120, K Wheeler & Sons £118

BREEDING SHEEP (133) Auctioneer: Nick Young

Mainly Lleyns and Shetlands and there was a trade for them on the day with **D Atkins** capturing the first four top spots for Lleyns **£110, £90, £86** and **£85** per head. More are on their way.

GOATS (3) Auctioneer: Nick Young

Anglo Nubian wether sells at **£140**, Boer females make **£100** each.

Entered for next week - 100 ewelambs from A Ainslie

PLEASE ENSURE ALL STOCK BROUGHT TO MARKET ARE TAGGED CORRECTLY

Please let us know exactly what you have to help us to make the best price of your stock. For up-to-date marketing advice please call the sheep hotline 01323 844874 or the mobile 07890 359622 today. We want your sheep at Hailsham!

Farm Worker Position Available at Passmore Coombes

On a mixed downland farm
Work includes sheep, cattle and arable
Experience is an advantage but not essential
Good rates of pay

Please call Andrew on 07760 557909

Free, farmer led events and mentoring programme in the South Downs National Park

Pasture and Profit in Protected Landscapes is a free, farmer-led programme of farm walks, events, webinars and mentoring open to everyone farming in the South Downs National Park.

It is intended to support farmers who would like to explore adaptive grazing techniques and focuses on agroecological farming methods, adaptive and conservation grazing and reduction of inputs to help farmers improve business resilience.

The programme is facilitated by Pasture for Life, funded by FIPL and supported by the South Downs National Park Authority.

To find out more or to sign up please email isabella@pastureforlife.org
or call Ali on 07805 167 624



AGRICULTURAL & INDUSTRIAL
**STEEL FRAMED
BUILDINGS**
SUPPLIED & ERECTED



Daniel Hunter-Evans

07951 438793

daniel@sussexsteelconstruction.co.uk
www.sussexsteelconstruction.co.uk





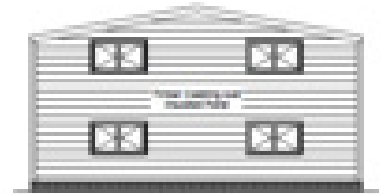
Planning | Project Management Procurement Services

We offer a fixed price
28 day Agricultural Prior
Notification Application
including:

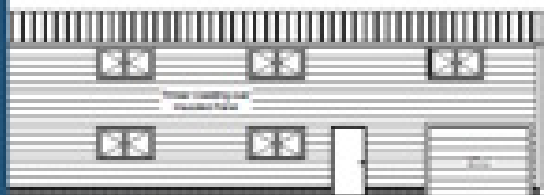
- Ordnance Survey Mapping
- Design Drawings
- Application
- Local Council Fees



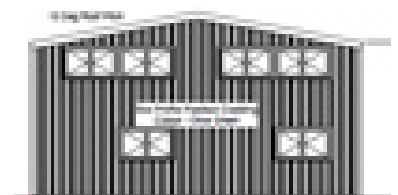
Front Elevation



Left Elevation



Right Elevation



Rear Elevation

For more information or to arrange a site visit call or email:
Nick@nfieldprojects.co.uk | 07738 703498



GRAHAM LONG

STEEL CONSTRUCTION LTD

FOR ALL YOUR AGRICULTURAL BUILDING NEEDS



TEL: 01435 865370 MOB: 07795 226296
graham@glconstruction.co.uk



CLEAR, RELEVANT & PROFESSIONAL ADVICE WHEN YOU NEED IT

Nick Young FRICS

01435 865077

e-mail: nickyoung@watsonsestates.co.uk

Farm insurance, the way it should be

We're a family-run business and pride ourselves on forging long term relationships with our farming and agricultural clients. Covering the South East, South West and Midlands, we deliver an extensive range of farm, agri business and equine policies tailored to you.

www.county-insurance.co.uk/farms

Farm & Equine **01865 844985**

General **01865 842084**

 Follow us **@County_Farm**

